

国文学研究資料館の新プロジェクト
《データ駆動による課題解決型人文学の創成》

Model Building in Humanities through Data-driven Problem-solving: A New Project by the National Institute of Japanese Literature

KOMIYAMA Fumi Librarian

MATSUBARA Noriko, Ph.D. Specially appointed Associate Professor

YAMAMOTO Kazuaki, Ph.D. Professor, Core Data Center Director

The National Institute of Japanese Literature

National Institutes for the Humanities, Inter-University Research Institute Corporation

国文研DDHプロジェクト始動

- **NIJL-DDH project**

基盤データの拡充

- **Expansion of the core data**

今後の展望

- **Future Strategies**

国文研DDHプロジェクト始動

NIJL-DDH project

Model Building in Humanities through Data-driven Problem-solving :

Abbreviations: NIJL-DDH project
Period: FY2024 – FY2033



Web Site

<https://lab.nijl.ac.jp/humanitiesthroughddps/>

大量の古典籍の電子化・テキスト化による一般への開放と利活用推進

現状

- ・ 社会の分断と疎隔
- ・ 古典との断絶
- ・ 現代の複雑な課題

なぜ今、古典の知か

引き継がれてきた知識や知恵を、**現代にも通底する課題へのヒント**として利活用

人間社会の課題解決

データ駆動による
課題解決型人文学

- ・ 古典の一般への普及
- ・ 共感を生み出す
- ・ 古典の知恵を活かした課題の解決手法を開拓
- ・ 言語文化を継承

古典を「開く」

現代の課題から古典の知を再発見



データの集積

データインフラ
ストラクチャの構築

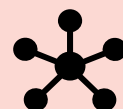
- 15万点の典籍追加画像
- 画像からテキストデータへ
- メタデータの標準化推進



データの解析

人文系データ分析
技術の開発

- AIの活用による大規模データの分析
- TEIによるデータの構造化等



データの利活用

コンテンツ解析
からの展開

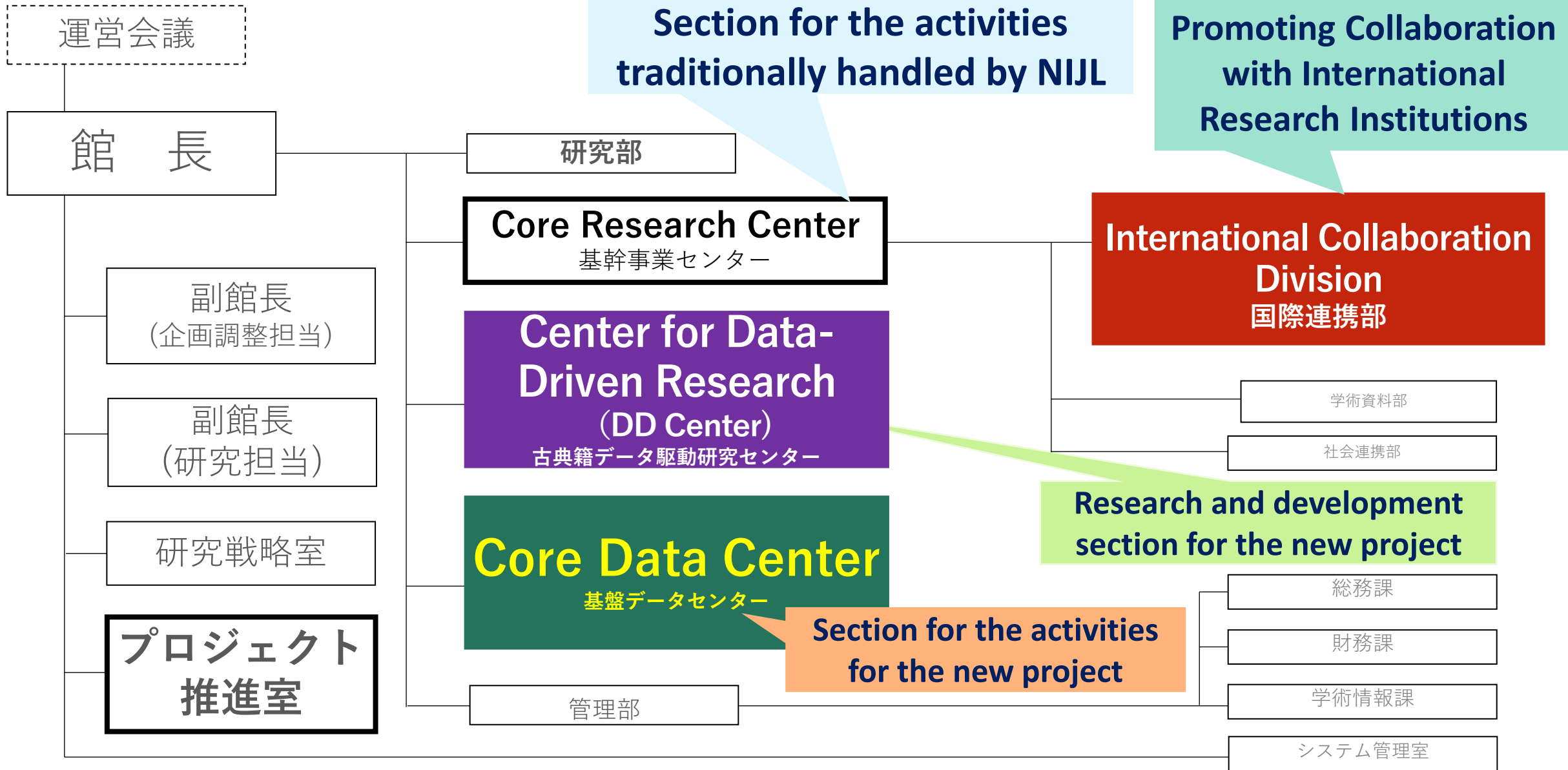
- 貢献可能なコンテンツの抽出
- 総合書物学や典籍防災学等



新たなデータ開拓

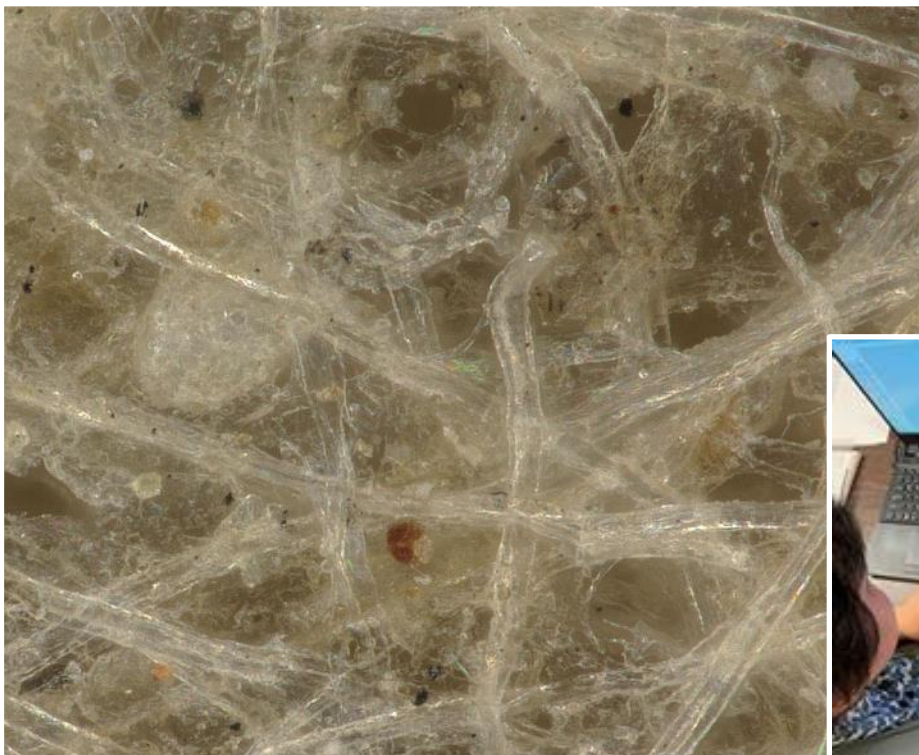
マテリアル
分析・解析

- マテリアルとしての書物の分析



顕微鏡観察からみえる複製本の不自然さ

Unnaturalness of the facsimile book discovered by microscope



18世紀の草双紙の紙 = 再生紙

Late 18th-century *Kusa-zoshi*
Printed on recycled paper



複製本 = バージン紙

1927 reproduction of *Kusa-zoshi*
Printed on virgin paper

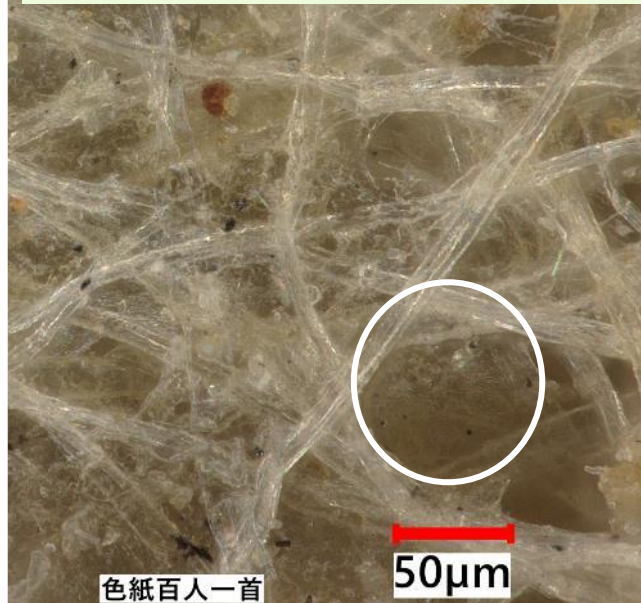
近世と近代の違い = 紙質の違い

Each pre-modern book has **its own appropriate paper quality.**

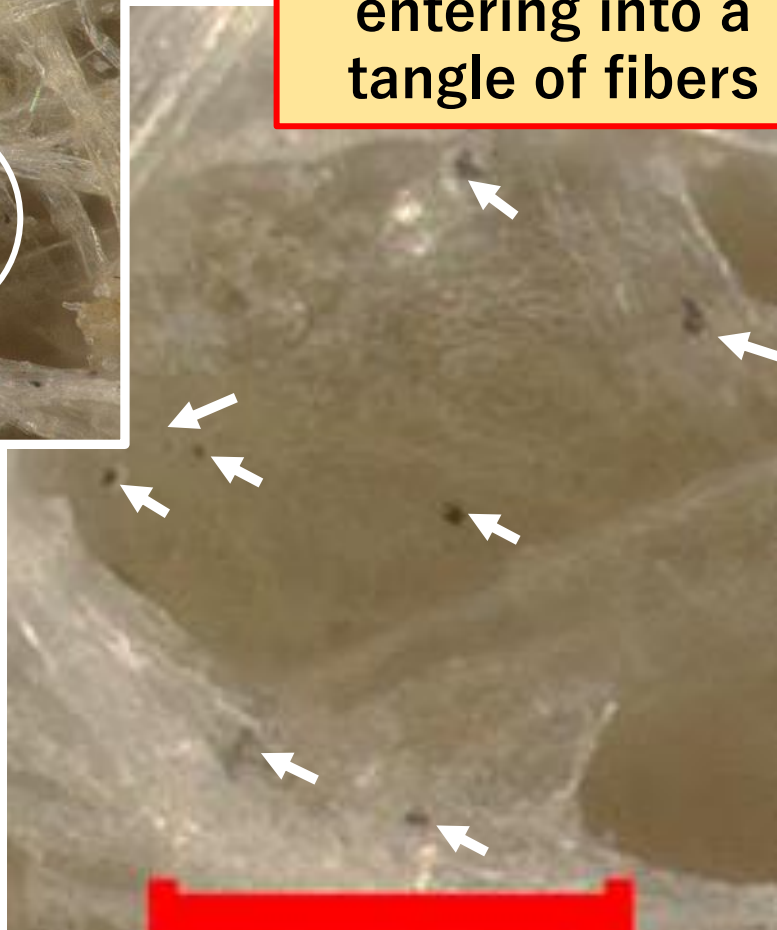
Evidence of recycled paper

どうしたら漉き返しがわかるか

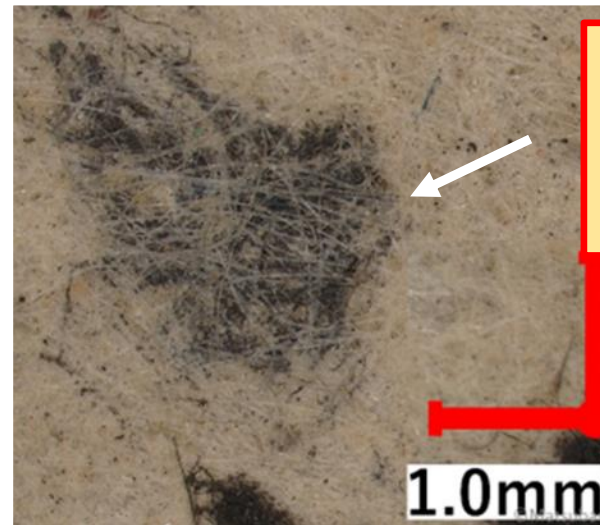
Late 18th-century
Kusa-zoshi



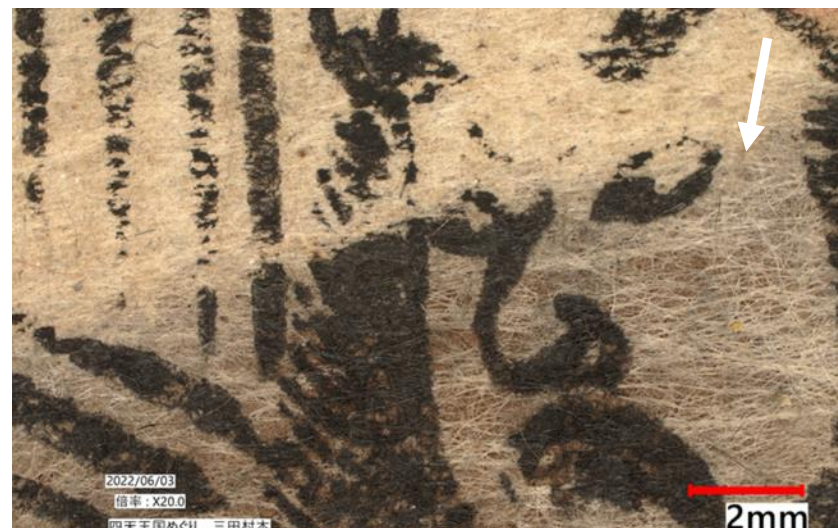
墨点の点在
Sumi dots
entering into a
tangle of fibers



墨付きの繊維群
Clumps of *sumi*-
stained fibers



紙片
Piece of paper



Microscopes reveal the cause of visual discomfort.

『江戸生艶気樺焼』天明5(1785)
“Edoumare Uwaki no Kabayaki”

国会図書館蔵
NDL
簾の目模様
striped
pattern
of
bamboo
screen

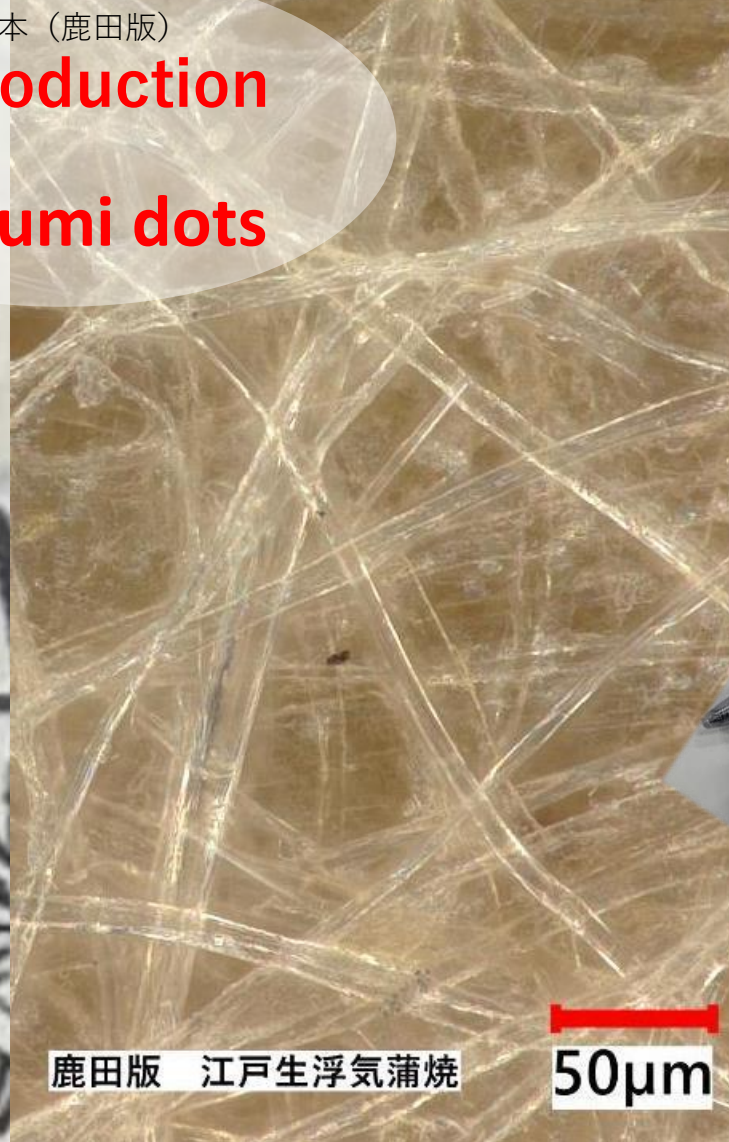


複製本（鹿田版）

Reproduction

No Sumi dots

違いがわかる顕微鏡



鹿田版 江戸生浮気蒲焼

50μm

With a
portable,
easy-to-
use device



➤ NIJL / EAJRS Kuzushiji workshop (くずし字ワークショップ) (Started in 2011)

2025年よりオンライン開催と対面開催を毎年交互に開催

➤ Since 2025, the online and in-person sessions will alternate each year.

EAJRS Webサイト 特設ページで過去開催時の教材や参考資料リンクを公開中



WS



Resources

NIJL/EAJRS Kuzushiji workshop

NIJL/EAJRS Kuzushiji Workshop, which is a collaborative programme between the National Institute of Japanese Literature (NIJL) and the European Association of Japanese Studies (EAJS), was established in 2011. It is managed by Professor Yūichirō Imanishi, then Director of the National Institute of Japanese Literature, and is supported by the Japanese Historical Linguistics Association (JHLA) in Europe, who manage Japanese antiquities and historical cursive scripts. The internationalisation and management of their Japanese historical linguistics research is managed more effectively.

Date	Venue	Info	More
April 2024	Strasbourg University of Strasbourg	Kotenseki: Prof. Yamamoto Kazuaki Komonjo: Assoc. Prof. Ōta Naohiro 25 participants	
April 2023	Online / Cambridge University of Cambridge. University Library	Kotenseki: Prof. Yamamoto Kazuaki Komonjo: Assoc. Prof. Ōta Naohiro	
April 2022	Online / Dublin Chester Beatty	Kotenseki: Prof. Yamamoto Kazuaki Komonjo: Assoc. Prof. Ōta Naohiro 20 participants	

Click “Resources” → Links to online resources on Kuzushiji are available.

Resources for Kuzushiji

Basic information on wakosho (和古書についての基本的情報)

- Various styles of books 和書のさまざま (和本の基本的な情報)
- Book cover designs in black and white 「表紙文様集成」
- Book cover designs in colour 表紙の文様について

Transcript into printing form (くずし字を翻刻するためのサイト)

- Miwo (みを) Specialises in pre-modern printed books
- Komonjo camera fumi no ha (古文書カメラふみのは) Specialises in manuscripts
- くずし字アプリの活用 KuLA
- IME Pad style hand-writing search (手書きくずし字検索)
- 日本古典籍くずし字データセット
- OCR for kuzushiji (KuroNetくずし字認識サービス)
- KogumaNetくずし字認識サービス (一文字使用例)
- Kuzushiji transcription service, National Institute of Technology, Toyota College (豊田高専 くずし字翻刻サービス)

Transcript into kuzushiji (活字からくずし字を調べるツール)

- 史的な文字データベース連携検索システム
- 小学堂(台湾) 漢字の異体字を調べるのにも使える

➤ NIJL/ EAJRS kotenseki seminar (古典籍(文献資料)セミナー) (Started in 2023)

EAJRS YouTube チャンネル で過去開催時の動画を公開中

NIJL / EAJRS KOTENSEKI SEMINAR

Click "More" → Previous videos are available.

NIJL / EAJRS kotenseki seminar

The *Kotenseki* seminar series, organized by National Institute of Japanese Literature (NIJL) and European Association of Japanese Resource Specialists (EAJRS), covers various topics related to Japanese pre-modern materials. The online lectures will be given by a researcher from NIJL in Japanese. No English translation will be given.

date	topic	info	more
18 October 2023	Characters engraved on seals in Japanese books	Dr. Matsunaga Kyusei (Specially Appointed Assistant Professor, Research Department, NIJL)	

NIJL / EAJRS kotenseki seminar

2本の動画 36回視聴 最終更新日: 2024/03/11



Seminar



Videos

<https://www.eajrs.net/koten/nijl-kotenseki-seminar>

➤ Directory of Overseas Collections of Old and Rare Japanese Books, Other Print Materials and Manuscripts (在外日本古典籍所蔵機関ディレクトリ)

日本国外において日本古典籍等を所蔵する図書館、美術館についての情報を提供

This directory provides information on institutions like libraries and museums that hold old and rare Japanese materials and related items.

National Institute of Japanese Literature > Database >

Directory of Overseas Collections of Old and Rare Japanese Books, Other Print Materials and Manuscripts

在外日本古典籍所蔵機関ディレクトリ

[About this Directory](#) [Directory List Table](#) [Directory Data](#) [日本語ページ](#)

<https://base1.nijl.ac.jp/~overseas/index-e.html>



Directory

今後のイベント予定

• Upcoming Events

Kotenseki Seminar (via Zoom)

- Date: October 2024 (tentative)
- Lecturer: Prof. DAVIN Didier (Associate Professor, NIJL)
- Theme: Buddhist Texts



Kuzushiji workshop (via Zoom)

- Date: March 31 - April 2, 2025
- Lecturers: Prof. Kazuaki Yamamoto (Professor, NIJL)
Prof. Naohiro Ota (Associate Professor, NIJL)

日程や申込等の詳細情報は決まり次第 EAJRS Webサイト で公開予定

Details regarding the schedule and registration will be announced on the EAJRS website as soon as they are finalized.



Director
センター長

Sub Director
副センター長

Researchers
センター教員



Staff
事務

center_db@nijl.ac.jp



□ Cooperation officer

□ Digitalization specialist

□ Metadata specialist

□ Metadata coordinator

Languages supported:
Japanese, English

デジタル化した
古典籍の
連携方法を知りたい





HORINO Kazuko
Cooperation officer



SHIMAMURA Yuko
Cooperation officer



KOJIMA Ayumi
Digitalization Specialist



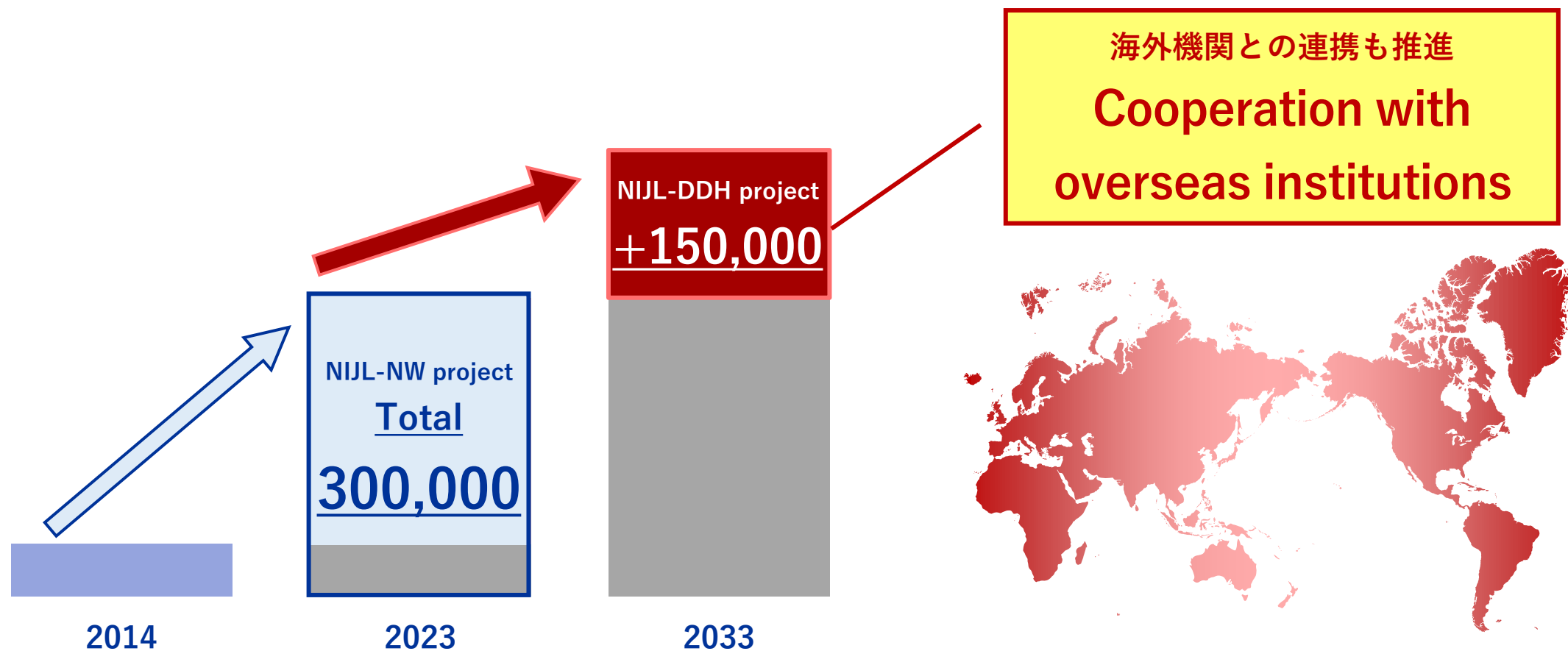
KOMIYAMA Fumi
Metadata Specialist



HOSHIAI Akiko
Metadata Coordinator

**There are many other
specialized staff members
as well!**

- 150,000 images of premodern Japanese texts will be available on the “Union Catalogue Database of Japanese Texts”





編集履歴 - 2024-06-11 11:11:54

Text Data converted by OCR
270,000 Titles



オンラインテキスト校正システム

Proofreading



編集履歴 - 2024-06-11 11:11:54

Proofread Text Data
3,000 Titles

```

<p>萬葉集巻第一</p>
<div corresp="#註明天皇">
  <div xml:id="旧国歌大観番号">
    <p style="text-indent:1em">雑歌</p>
    <p style="text-indent:2em">
      <note place="right" resp="#定家本" types="注" xml:id="note0100001" targetEnd="#note0100001e">雄略天皇</note>
      <note place="right" resp="#定家本" types="合点" subtype="訓" xml:id="note0100002" targetEnd="#note0100002e">ハハツセアサクラ</note>
      沿瀬朝倉
      <anchor type="noteEnd" xml:id="note0100002e">
        宮
        <anchor type="noteEnd" xml:id="note0100001e">
          <del type="ミセケチ" rend="red" xml:id="shu0100001">天皇代</del>
          <note resp="#万葉集" type="割書" xml:id="note0100004">
            <note type="訓" place="right" xml:id="note0100003" resp="#定家本">オホハツセワカタケ</note>
            大沿瀬稚武
            <anchor type="noteEnd">
              天皇
            </note>
          </del>
          <p style="text-indent:2em">天皇御製歌</p>
          <ab xml:id="many0001" type="長歌">
            <lb>
              <seg type="ruby">
                <seg type="rb">籠毛與美顔母乳布久思毛與美夫君志持此</seg>
                <seg type="rt" xml:id="note0100005" resp="#定家本" rend="ri">
                  <del type="ミセケチ" rend="red" xml:id="shu0100002">カタケ</del>
                  <del type="ミセケチ" rend="red">マ</del>
                  <add place="right" rend="red" type="異訓">コ</add>
                </seg>
              </del>
            </ab>
          </del>
          <del type="ミセケチ" rend="red" xml:id="shu0100003">マ</del>
          <add place="right" rend="red" type="異訓">コ</add>
        </del>
      </p>
    </div>
  </div>
</div>

```

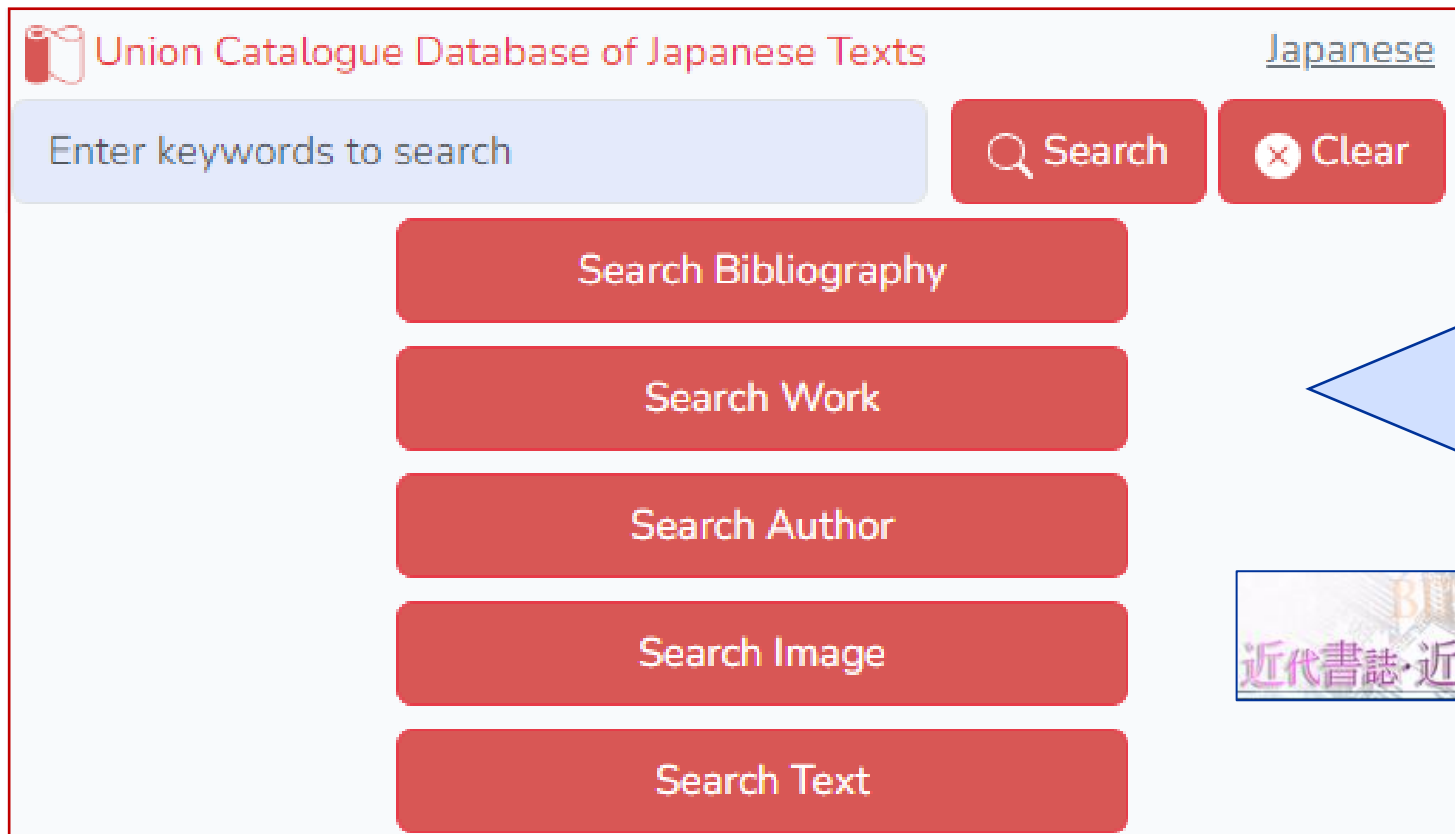
TEI

廣瀬本万葉集の翻刻およびTEI化共同プロジェクト
『廣瀬本万葉集』
<https://github.com/kokubunken/nijl-manyoshuTEI>




基盤データの拡充

Expansion of the core data



近代資料も追加

April 1, 2024

The “Bibliographic and Image Database Japanese Modern Times” has been merged.



<https://kokusho.nijl.ac.jp/?ln=en>

March 1, 2023 Released



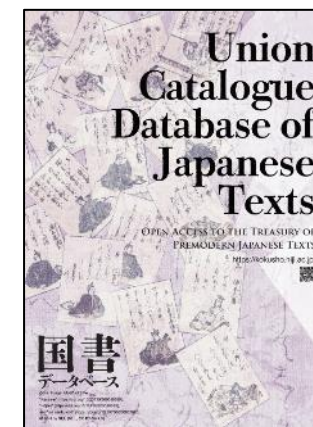
DB



User Guide



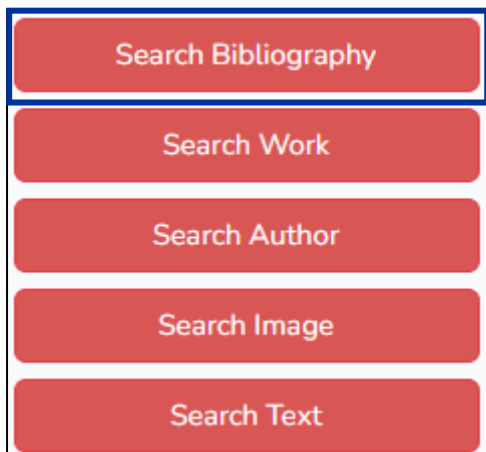
Brochure



英語版
パンフレットあり

How to Search 近代資料の検索方法

1 Select the "Search Bibliography."



2 Enter keyword(s) and select the "Modern's" from the "Bibliographic Source" choices.



近代作家自筆資料
が増加中

3 Select one of the materials from the list of search results.



4 Bibliographic Detail.



June 3, 2024

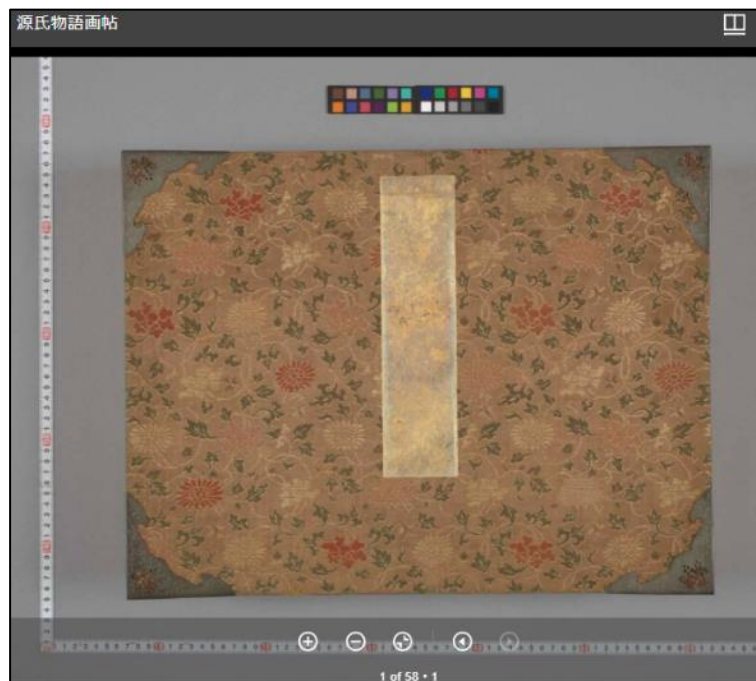
国文研所蔵資料の画像利用条件を パブリックドメイン に変更

The terms of use for the images,

limited to NIJL collections, have been changed to the "**Public Domain.**"



News



Manifest URI <https://kokusho.nijl.ac.jp/biblio/200014736/manifest>

Condition of Image Use

The digital images may be used at your discretion.
Please use the following credit line when reusing the image.
If you don't mind, please also contribute [feedback on how the image is being used](#).

Credit line for copying

Manifest URI <https://kokusho.nijl.ac.jp/biblio/200014736/manifest>

Condition of Image Use

The digital images may be used at your discretion.
Please use the following credit line when reusing the image.
If you don't mind, please also contribute [feedback on how the image is being used](#).

Credit line for copying

Click → Credit line

Credit line for copying

"源氏物語画帖" owned by National Institute of Japanese Literature,
retrieved from Union Catalogue Database of Japanese Texts
(<https://doi.org/10.20730/200014736>)

Click → Copy to Clipboard

"源氏物語画帖"
owned by National Institute of Japanese Literature,
retrieved from Union Catalogue Database of Japanese Texts
(<https://doi.org/10.20730/200014736>)

Clipboard*

ERDB-JP

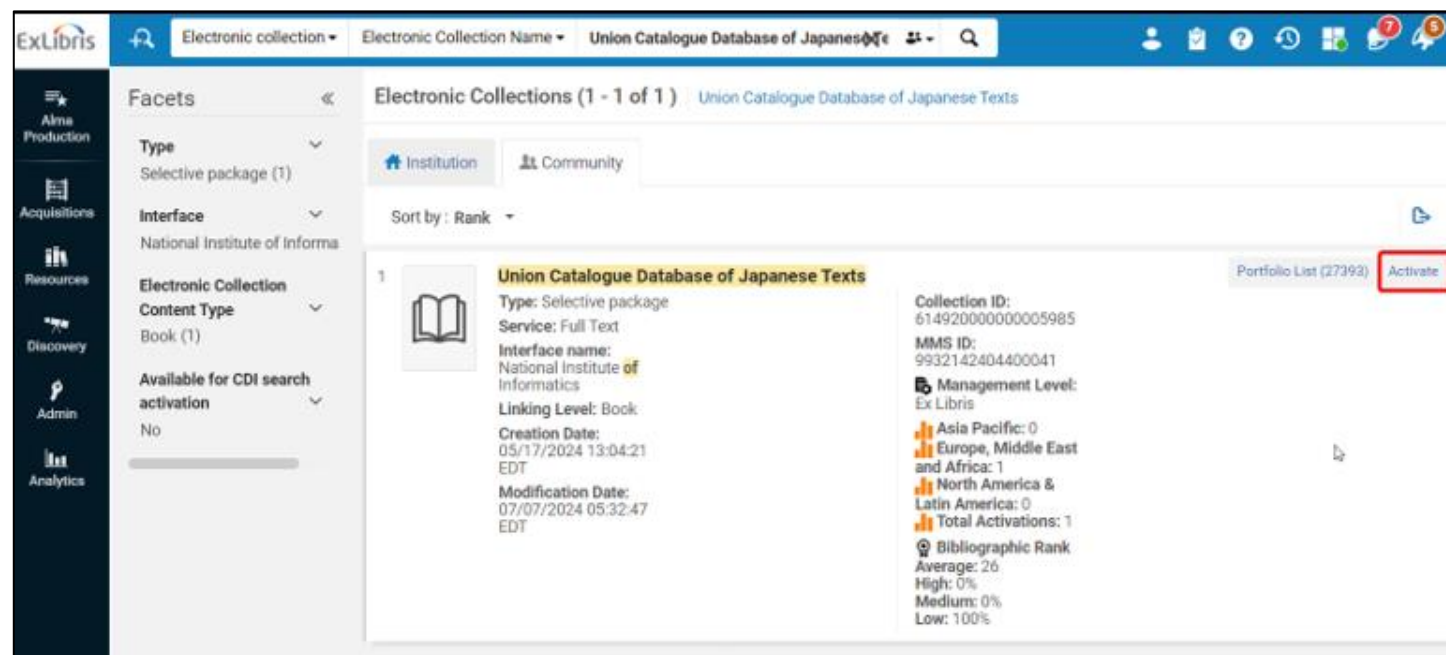
Electronic Resources Database-JAPAN

ERDB-JP のコンテンツが Alma KB やディスカバリーサービスで活用可能に

The “ERDB-JP” contents has been available in “Alma KnowledgeBase.”

• How to Set up

- Search for **“Union Catalogue Database of Japanese Texts”** in the Community Zone
- Select the Activate action to add the resource to the Institution Zone (IZ)
- After some steps of confirmation, the resource will become active in the IZ and can be searched in the Discovery.
(This may take a little time since the collection is large.)



© 2024 Clarivate. All rights reserved.

今後の展望

Future Strategies

NIJL-NCC/CDDP Digitization Grant Program

Expanding Your Access to Japanese Information Resources

Home About News Resources Committees & Working Groups NCC Events Spotlights

Contact Search this Site Search

NCC Japan - North American Coordinating Council on Japanese Library Resources / NCC Programs / Comprehensive Digitization and Discoverability Program

Comprehensive Digitization and Discoverability Program: 2024-2025 NIJL-NCC/CDDP Digitization Grant Program

Home 2024-2025 NIJL-NCC/CDDP Digitization Grant Program CDDP Video Series

CDDP Award Program - 2022-2023 Pilot Cases Related Presentations

Great Kantō Earthquake (関東大震災) Project

Introduction

The National Institute of Japanese Literature (NIJL) and NCC's Comprehensive Digitization and Discoverability Program (CDDP) Task Force introduce a pilot grant program in support of digitization projects of premodern Japanese research materials held by North American institutions. This is the first part of the three-year program that we are planning to offer. Please see 2024-2025 NIJL-NCC/CDDP Digitization Grant Guidelines below for details of the program and the instructions for submitting your applications.

NIJL has long made efforts to bring together holdings information of numerous domestic and overseas institutions as well as image files regarding Japanese books up to the end of the Edo period (1603-1867) through its [Union Catalogue Database of Japanese Texts \(国書データベース\)](#) (a list of the institutions and individuals that have contributed image files in the database is available [here](#)). The image files to be created through the NIJL-NCC/CDDP Digitization Grant Program will be made available in this database, so that any users on the internet can easily discover, access, and compare images of rare Japanese holdings of different institutions.

NIJL-NCC/CDDP Digitization Grant Screening Task Force Members

- **Toshie Marra**, Librarian for Japanese Collection, UC Berkeley (Chair)
tmarra at berkeley dot edu
- **Kiyonori Nagasaki**, International Institute for Digital Humanities
nagasaki at dhii dot jp
- **Haruko Nakamura**, Librarian for Japanese Studies, Yale University
haruko dot nakamura at yale dot edu
- **Setsuko Noguchi**, Japanese Studies Librarian, Princeton University
snoguchi at princeton dot edu
- **Fabiano Takashi Rocha**, Japan Studies Librarian, University of Toronto
fabiano.rocha at utoronto.ca
- **Kazuaki Yamamoto**, National Institute of Japanese Literature
yamamoto.kazuaki at nijl dot ac dot jp



Web Site

<https://guides.nccjapan.org/cddp/nijl-ncc/digitalgrant>

➤ University of Kansas カンザス大学

カンザス大学で作成されたデータの提供による連携

- Type: Providing images taken at KU

数十点程度のコレクション（連携開始時点でデジタル化されていない資料も含む）

- Collection: **Several dozen items**,
a mix of digitized and unphotographed materials

国文研教員による短期的な資料調査を実施

- **Support from NIJL: Researchers conducting material investigations**

未撮影資料のデジタル化後、書誌・画像データ提供を受け、公開を予定

- Next steps:

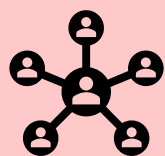
Photography of unphotographed materials

Provision of digitized materials and bibliographic data

Published on our Database



Digital
Collections



We would like to collaborate
even with **small collections.**

『是害坊繪詞』（owned by University of Kansas Libraries）
<https://digital.lib.ku.edu/ku-speccoll/7049>

国書データベースの連携機関（パートナー）を募集しています。

● We are looking for partner for our Database.

デジタル画像をお持ちの機関

✓ Institutions with digitized materials.

校正テキストをお持ちの機関、国文研と共同でのテキスト化に関心のある機関

✓ Institutions with proofread text data, or interested in text digitization in collaboration with NIJL.

More access

日本古典籍を利用する世界のユーザーからのアクセス

Access from global users.

Searchability

さまざまなディスカバリサービスからの検索可能に

Be searchable via various library discovery services.

Research

原資料の所蔵機関表示を通じた、共同研究への発展

Development into joint research.

Items:

冊子、卷子本や一枚物（例: 浮世絵）等

○Books

○Scrolls

○Single-sheet items etc.
(such as ukiyo-e prints)

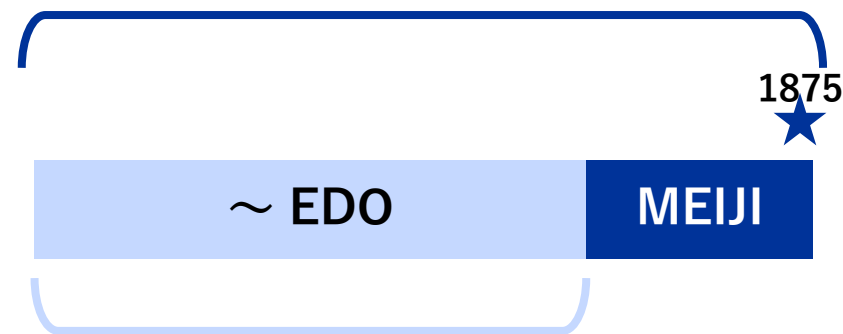


Targets:

明治初期（明治8(1875)年頃）まで

Up to the early Meiji period (around 1875)

NIJL-DDH project

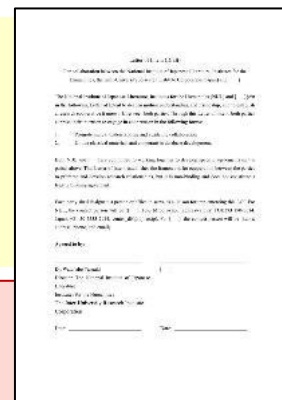


NIJL-NW project

Possible in these cases: **Materials digitized by other funds**

(as long as rights processing with relevant parties is in place)

他機関のファンドによりデジタル化した資料もOK（関係機関と権利関係の調整ができているもの）



Support
from NIJL:

- Funding for Digitization
- Provide a document template

デジタル化経費の負担

連携時に要する書類雛形の提示

Requirements for cooperation on the *Kokusho* Database

Bibliographic Information

We kindly request the provision of **bibliographic, holding, and item data** for the materials to be linked, in MARC or other suitable formats. The bibliographic information will be verified by our cataloging librarian.

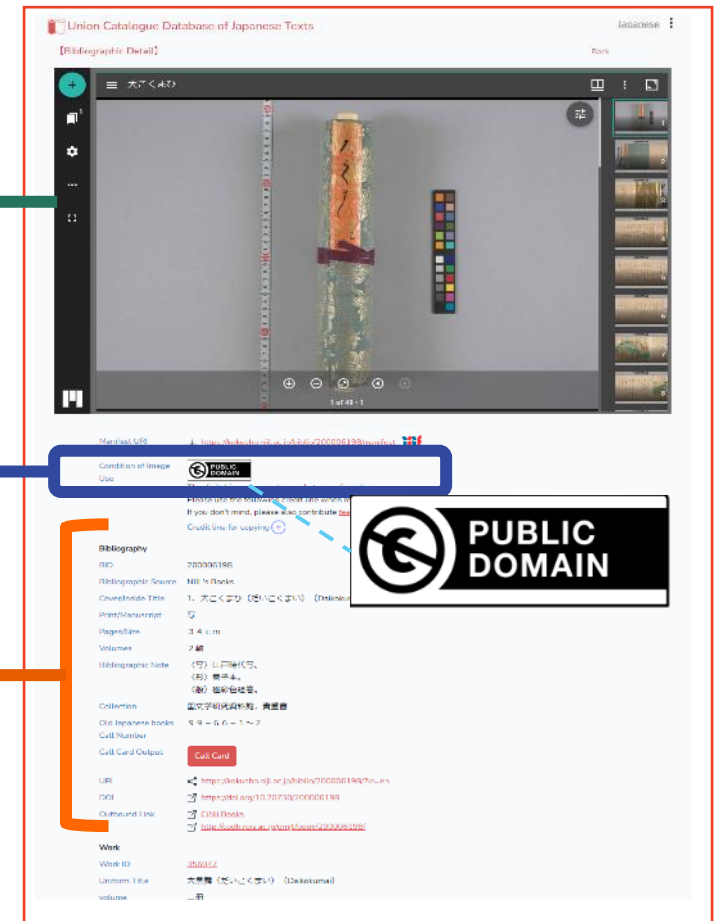
Digitized Materials

We would greatly appreciate it if you could provide **the IIF Manifest URI or images in TIFF format**. Publishing not only the bibliographic information but also the images of the materials in the database will delight users worldwide.

Agreement to Open Usage Policies

If you are able to provide the images, please consider making them available under **open usage conditions**.

Example of Display in the *Kokusho* Database

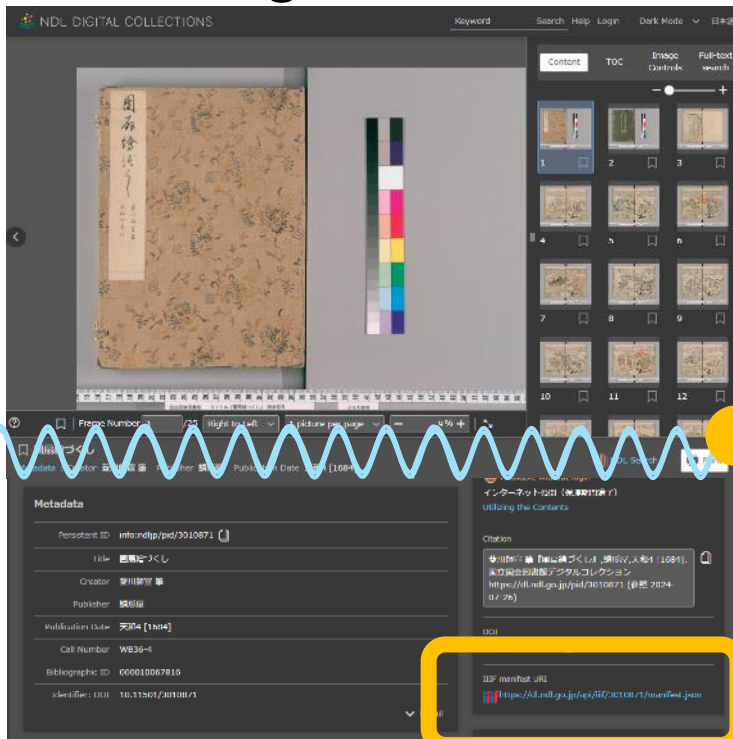


<https://kokusho.nijl.ac.jp/biblio/200006198/>

Digitized Materials

For example

NDL Digital Collections



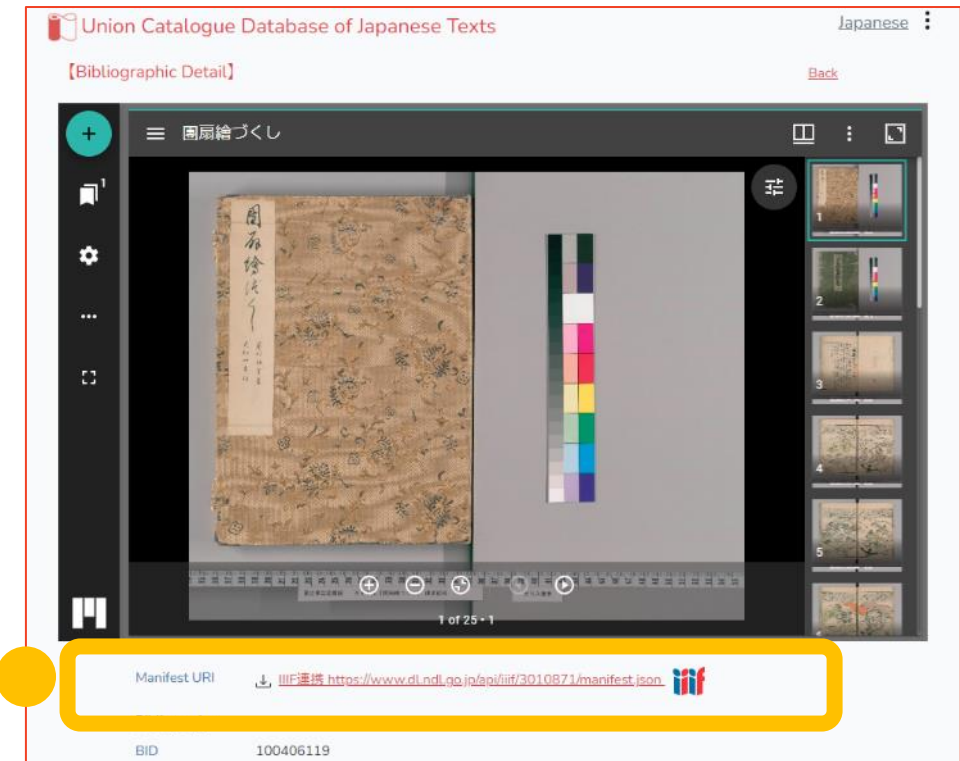
<https://dl.ndl.go.jp/en/pid/3010871/>

If publicly available images with **IIF manifests** are provided, they can be easily integrated and published.

IIF manifest URI

<https://www.dl.ndl.go.jp/api/iif/3010871/manifest.json>

Kokusho Database



<https://kokusho.nijl.ac.jp/biblio/100406119/>

If implementing IIF integration is difficult, you can provide the image files, and we will publish them from the *Kokusho Database*.
(Please provide the images in **TIFF** file format.)



Agreement to Open Usage Policies


We welcome the publication of images in the Kokusho Database **under open usage conditions !**

In the database, **Public Domain** or **Rights Statements** are displayed, and notes on citations are included.

We would appreciate it if you could also grant permission for NIJL **to tag the images** provided and **to convert the images to text** using AI-based OCR.

Condition of Image Use

Condition of Image Use



The digital images may be used at your discretion.
Please use the following credit line when reusing the image.
If you don't mind, please also contribute [feedback on how the image is being used](#).
Credit line for copying (+)



Text



Tag



We anticipate making your collection images available through the *Kokusho* Database, allowing more people to utilize them!

If you have any questions about participating in the *Kokusho* database, please feel free to contact us at center_db@nijl.ac.jp (Languages supported: Japanese, English)

画像収集、国書データベース等の事業について

- About Digitization of premodern Japanese texts, Union Catalogue Database of Japanese Texts, etc.

center_db@nijl.ac.jp



DD Center での共同研究について

- About Joint Research in the DD Center

pjsuishin@nijl.ac.jp

