

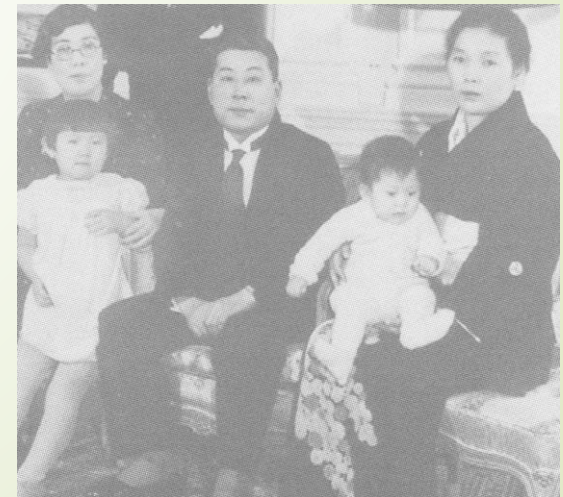


Tracing for uncatalogued Japanese artifacts in Finland

Tero Salomaa, Hokkaido University, Helsinki

Personal background

- ▶ Annotated Catalogue of the Japonica Collection
- ▶ Helsinki University Library 1994
 - ▶ --G.J. Ramstedt (1870-1950) Japanese books, --Miyazawa Kenji
 - ▶ Japanese Embassy books (Mustonen donation). Japanese Embassy was closed down in November 1944. The Embassy's library was bought by second-hand dealer who later sold the books to the librarian Arne Mustonen. (150 titles). Chiune Sugihara worked at Japanese Embassy in Finland before he was placed to Kaunas, Lithuania. Titles include some books concerning "Jewish problem"





Tracing

- ▶ 1. Databases, published catalogues. Inquiries to the museums.
- ▶ --Ms. Ollikainen: catalogue of National Museum Japanese Artifacts (1994)
- ▶ --Prof. Koivunen (Turku U.): Exoticised Objects and Widening World: Non-European Cultures on display in Finland between 1870s and 1910s
- ▶ 2. Early Finnish visitors to Japan
- ▶ --Seamen (Sea Museums & archives), Missionaries, Ambassadors
- ▶ 3. Interviews: Finn-Japan Friends, Mr. Halen (40 years experience at Asian department U. of Helsinki). Private collectors, antique shops & dealers
- ▶ 4. Newspaper etc. articles
- ▶ 5. Advertisement (Finn-Japan Friendship magazines)

Tracing for people

► Provenance

- **Ari Kyllönen: Samuraiden Vieraana, Suomalaisia Japanissa 1703-1917**, published 2013
- Over 500 Finns (known) visited Japan before 1917
- First Finn (from Turku), Mr. Daniel Angelius 1703

---Voc-ship Ellemeet

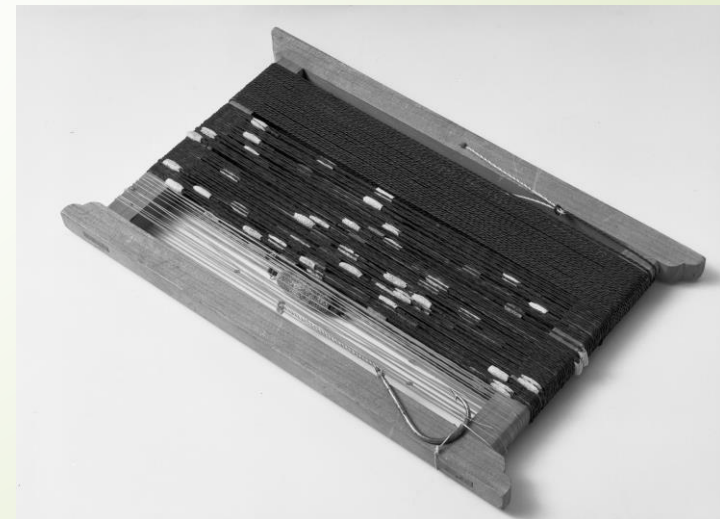
► Some source material

- Verenigde Oostindische Compagnie (VOC) –
- Opravenden, website, Nationaal Archive.
- Ancestry.com (Passenger and crew lists)



Newspaper articles

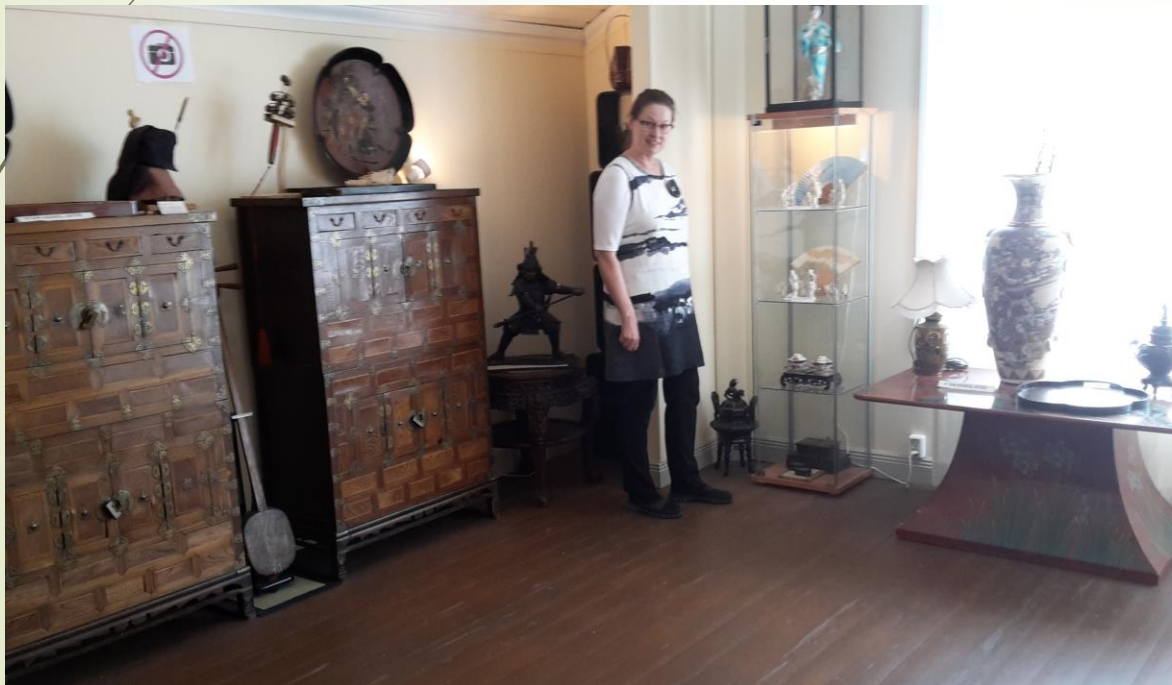
- Digi – National library's digital collection. All Newspapers published in Finland between 1771 to 1910 and most of the Journals until 1910.
- 1849 "Morgonbladet 26.2. 1849". Prof. Tengström has bought 50 Japanese crab collection during his visit to Batavia
- --contacted Finnish Museum of Natural history. Crabs are from "Java".
- 1898 "Östra Finland 29.1898" ..Finnish Fishery Museum has collection of Japanese Fishery items bought by Mr. Sanman. Due the lack of space those are kept on addict."
- -----
- The Fishing Museum was closed 1920
- Friends of Finnish Fishery Museum



Some findings

- 1) Lutheran Evangelical Association of Finland (LEAF/SLEY)
- Missionary work in Japan started 1900, until 1950's 25 missionaries
- Exhibition(s) in Finland
- 200-300 artifacts, no catalogue
- 300 photos
- Miniature house, Empress kimono (from 19th century), tools, dolls
- Several exhibitions, biggest in 2000 celebration of 100 years of Missionary work
- 2) Gallen-Kallela (1865-1931), Museum warehouse
- "JAPANOMANIA" (Ateneum 18.2.-15.5.2016, Nasjonalmuseet 16.6.-16.10.16, Statens Museum for Kunst 19.1.-23.4.2017). Chief curator Prof. Gabriel P. Weisberg
- 3) Private collections





Kress Inro Collection クレス印籠コレクション

- World largest Inro collection
- Else and Heinz Kress
- 18.000 Inro 's photographs
- Database with 40.000 artifacts & 120.000 photograps
- Huge lacquerware library
- Room for researchers





Questions / future plans

- ▶ Timeline –1950's
- ▶ Purchased/brought from Japan
- ▶ Provenance
- ▶ Documentation
- ▶ How rare/valuable artifact is
- ▶ Funding

- ▶ Suggestions, ideas, hints!



THANK YOU!

tsaloomaa@oia.hokudai.ac.jp

tsaloomaa@welho.com (private)